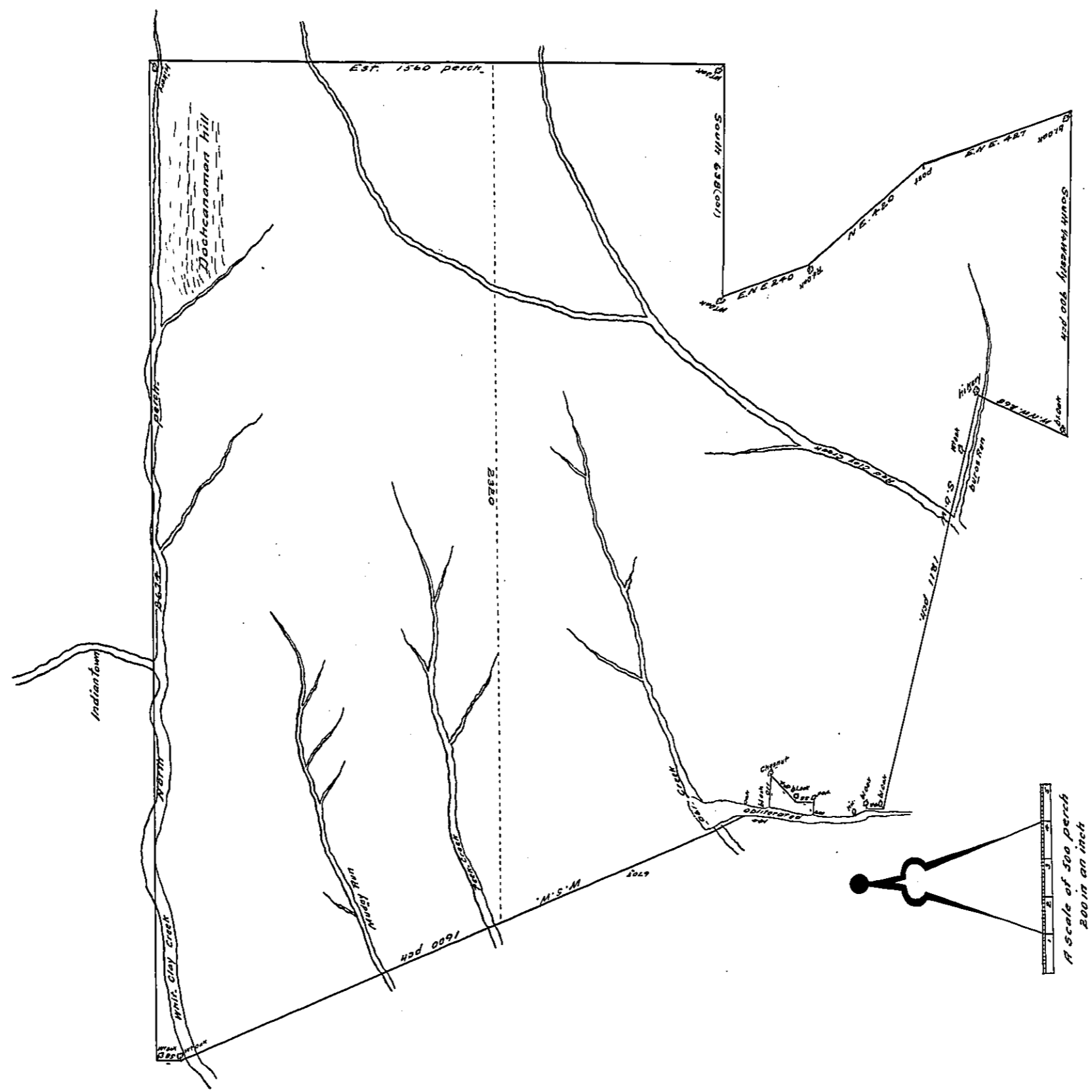


(Enlargement on Sheet)
 H. Hallingsworths (A61)
 of 3000 Acres Surveyd
 on Brandywine
 Survey 25.2.1700
 Copied
 46
 Govt
 Brandywine



By Virtue of a warrant from Gov Penn to me directed bearing date the 17th of the 12th month 1688 ----- This may Certify that I have surveyed and do hereby set out a tract of Land situate on the south Side of Brandywine Creek beginning at a black hickory tree standing by a branch of Red Clay Creek called Burons Run (ob1) ing to a corner tree of William Dickson's Land then Crossing a peice of vacant Land by a line of marked trees S.W. over Red Clay Creek at the fork thereof 1211 perch to a bounded black oak standing in a line of George Feeds Land (ob1) by his line west 112 perch to a bounded black oak being a corner of therd Georges Land s.s. W 1/2 N 1/2 36 perch to a bounded hickory being a corner of William Guest's Land and then by his line west 112 perch to a bounded white oak being a corner of Brian^{ts} Donalls Land then north 50 perch to a bounded poplar, then west 50 perch to a bound black oak then north west 84 perch to a bounded Chestnut tree then South 4 degrees N 1/2 W 110 perch to a bounded (ob1) oak then west 174 perches to a bounded black oak a corner of the Aforesd William Guest Land then by a Line Crossing Mill Creek, Red Clay, Muddy Run and white Clay Creek west south west 1600 perch (ob1) a white oak standing in a magh by the side of white Clay Creek the (ob1) 50 perch to a bounded white oak standing by a branch, then by a line north 267 perch Crossing the west branch of white Clay Creek at the fork thereof and running mostly parallel with the north branch to a bounded hickory standing on the west side of the sd Creek then E 5th 1560 perch Crossing Dochcanaman hill to a bound white oak then south 630 perch to a bounded white oak then E. N. E. 270 perch to a bounded Red oak then N. E. 720 perch to a corner post at George & Michael Harlans Land then by their Line E. N. E. 727 perch to a bounded black oak then Crossing a peice of vacant Land by a line S 60th W 900 perch to a bound (ob1) oak then west north west 2600 perch to the place of beginning Containing and surveyed for 3000 Acres the 25th day of the second month in the year 1700 P^r.

Henry Hallingsworth Surr^t

In Testimony, That the above is a copy of the original remaining on file in the Department of Internal Affairs of Pennsylvania, made conformably to an Act of Assembly, approved the 16th day of February A.D. 1833, I have hereunto set my Hand and caused the Seal of the said Department to be affixed at Harrisburg, the eighth day of March A.D. 1912.

Henry Houck,
 Secretary of Internal Affairs.